



SWS Newsletter

No.80 May 2014

The Sussex Woodcraft Society was formed in 1985 for the people of East and West Sussex who have an interest in any woodworking activity, or derive pleasure from wood crafted objects.

President: Wendy Quantrill

Chairman: Paul Reader

Secretary: Bob Jubb

Editor: John Freake

Webmaster: Frank Botterill

Web address: <http://www.sussexwoodcraft.co.uk>

Editor's Notes

Editorial

I would like to take this opportunity to say a huge thank you to Chris Grace on behalf of all for his efforts and advice in advising and loaning sound and video equipment for our meetings. We are all extremely grateful, and look forward to our own audio/visual gear arriving in due course..



ing a theme we will supply members who wish to take part with a block of oak. This will roughly measure 2"x 3" Each piece is slightly different so members can choose the piece they like the look of: maybe they will be able to see something in it !! As long as

you use the wood supplied, anything goes! Please support the annual competition, and have fun!

Chairman's Message May 2014

This year we have an extra show with a day on June 11th at Cyprus Hall as part of the Burgess Hill town week. Some of our members will be selling their products and also some of the members will be demonstrating their crafts. Hopefully this will help to promote the club and encourage some new members to join. This will be running throughout the day and into the evening as part of our normal club night. Please come along and support the club. Refreshments will be available!

This year's annual competition has a slightly different slant on it. Instead of hav-

At club nights we have started to have small workshops during our tea breaks and so far they have been very successful. Bernie Harris has done two evenings on sharpening chisels that have been very popular. We would like more people to come forward who maybe feel that they have certain skills/tips that they would be happy to pass on to fellow members. We have a wealth of experience and knowledge within the club and it is great that this can be passed onto other members.

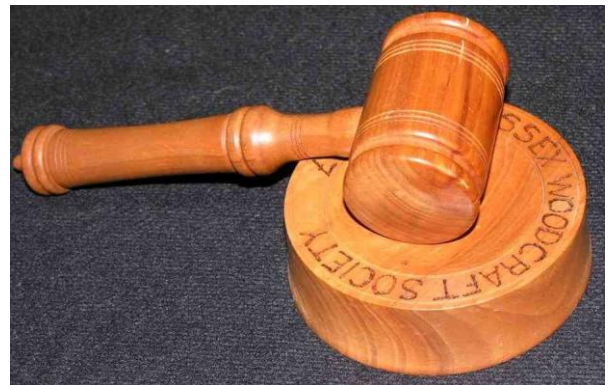
Society Meetings

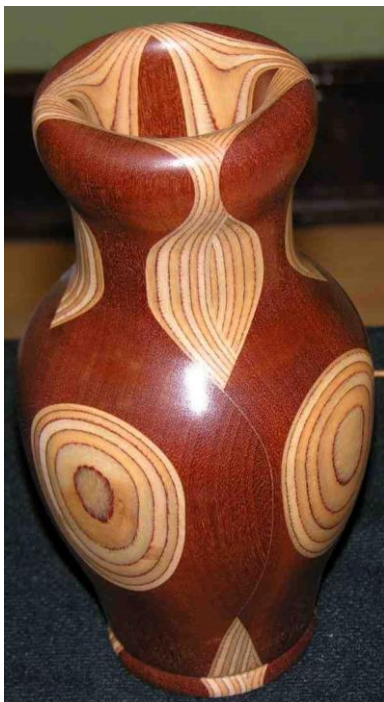
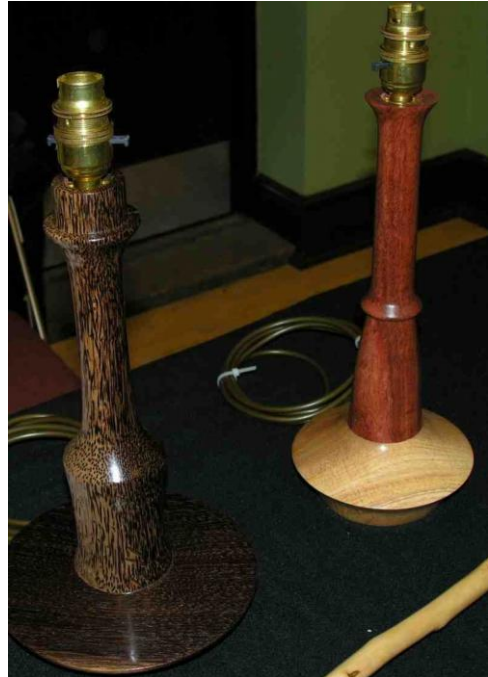
8 January 2014

Reprise of the Annual Show

An extremely entertaining evening was had by all listening to the stories and techniques used in making the exhibits from the 2013 Annual Show and Competition. The results were published in full in the previous edition of the Newsletter. There follows a random collection of photographs to remind readers of the fun we all had listening to the members tales.









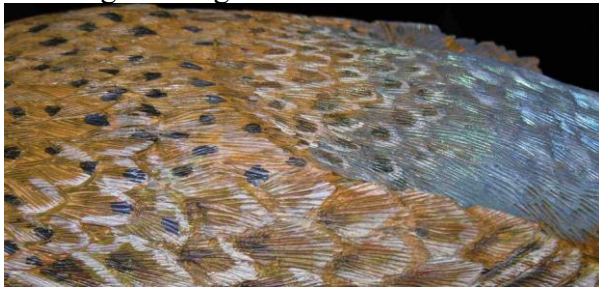
12 February 2014

Members Work exhibited this month

Eric Johnson showed a handsome Michigan Blueback Cock Pheasant.



Detail of the pyrographed and painted feathers are shown below. It seems to me that Eric will soon be using carved wooden flies to go fishing!



Bob Fielding showed photos of some attractive reptilian beech carvings he came across at Nyman's Gardens. I wonder how they will stop the weathering of the beech, it is notorious for rotting quickly.



Wendy Quantrill showed an unusual carving of the crucifixion. The main block is walnut, the bar in African Blackwood, plus some light veneer, giving a most effective contrast..



Keith Pettit was our invited speaker who gave a well illustrated talk on wood engraving.

Keith's workplace with the engraving being rotated on a sand-filled leather bag. The preferred wood is endgrained Box or Lemonwood (*Calycophyllum multiflorum*).



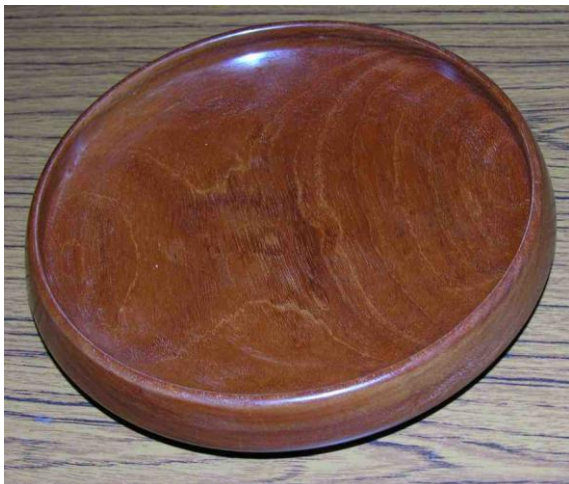
A print of one of Keith's many works.



12 March 2014

Members Work exhibited this month

John Bishop showed this bowl in mahogany, finished with umpteen coats of sealer and wax.



Tony Berstow is branching out into turning bowls of fruit. His attempt at making a set of four egg cups came to a halt when Murphy intervened, but he kept one as a memento!



Mike Demsey exhibited a bird carved from Bog Oak mounted on an English Oak base, all finished with Danish oil. My photo does not do your fine effort justice Mike!



Doug Moyes brought a netsuke carved in ivory, a hare with amber eyes.



Bernie Harris ran his sharpening demonstration for the benefit of all.



9 April 2014

Members Work exhibited this month

Mike Demsey showed a maple baseball bat he purchased in the USA many moons ago, now converted into a spirit carving by some judicious carving.



Chris Grace exhibited a pair of Indian Swinging Clubs completed as a recent commission. Each weighs in at 7 kg and meet a weight specification tolerance of about 2 oz!

All the maths were spreadsheet calculated using wood densities and slice laminations before cutting and making a lot of dust!



Jim Young showed a superbly delicate yew vase that scooped a First prize in a recent competition.



John Freake spring cleaning his workshop found this incomplete Jarrah segmented bowl where he has masked joint separation by inserting oak plugs as decoration.



Great interest being shown at the sale of tools for making miniature furniture. It was a veritable rugby scrum,.....first in best dressed!



Richard Salmon gave a fascinating talk about vintage carriage restoration by the Carriage and Wagon Department at The Bluebell Railway. The talk outlined a complex history of this charitable society, beautifully illustrated by slides, and of the drive to restore rolling stock to reflect actual history. Teak means passengers are in Third class, Mahogany Second class and American Walnut First class. It was a very interesting insight into what can be achieved when the will is present.

Letters to the editor

The South East Woodworking & Power Tool Show

Held in the Kent County Showground north of Maidstone. Entrance was just £6 as advance purchase, £8 at the gat. The show

was extremely popular judging by the crowds.

Tailpiece

I thought wheel spin was for bikers, now the turners are at it!



Thanks to Brian Campion and Bob Jubb

Tips

The buttons on my car key fob broke and stopped working. Toyota quoted me a price of about £137 for a new key, which I impolitely declined. My son-in-law trolled ebay on the internet and had a replacement set of buttons sent by post within a few days. Fitting took 5 minutes. Total cost £1.89 (including postage).

We live and learn!

John Freake

News from the clubs

South Downs Woodturners

About a year ago 4 friends (two of them SWS members) met to discuss the need for a new woodturning club in Sussex. We decided to base ourselves in the Brighton / Hove conurbation and set about finding a venue. We settled on the Portslade Town Hall due to it's facilities, parking and good transport links to the rest of the county. We decided on a poster and publicity campaign with the objective of letting as many people know about our plans as possible.

Our first meeting was in February 2013 where Chris Grace gave a demonstration to about 39 prospective members.

Thanks to a couple of grants we now have a lathe, radio microphones and a video

projection system, meaning that everyone can clearly see and hear our demonstrations. The work that our members display on our Tools 'n' Turnings table at meetings is amazing with an incredible range of turned items and sometimes the tools used to make them. This, together with our demonstrations, helps to promote discussion amongst members and motivates many to try out different ideas.

Beginners are well catered for, with the option of beginner sessions on a one to one basis held in members workshops. Feedback from the participants has been very positive. We have had 2 professional demonstrations in our first year together with a number of member demonstrations and competitions, also 2 practical evenings, and members seem to like our mix of activities. We continue to grow and welcome new members, now having closer to 60 and we have a full program of events for 2014. Unfortunately Brighton & Hove Council have decided to redevelop parts of Portslade Town Hall and sell the car park. So, we started our search for a new venue all over again. This time we have found Lancing Parish Hall where we will meet from January 2014, it has better facilities and hopefully we will be able to stay there a bit longer.

Chris Grace (Secretary) South Downs Woodturners



Member Tom Streeter demonstrates colouring



Terry Smart of Chestnut Products demonstrates finishes



Judging one of our first competitions



Discussions at a practical evening



Deep hollowing on a small lathe at a practical evening

Oakmeeds Carving Club



Peter Owen carving an elephant



Discussions and deliberations at our Tools 'n' Turnings table



General view of class



An overview of a typical Club meeting



Peter Fairhall with his carving of a pointer dog



Mark Baker, editor of Woodturning magazine demonstrates



Chris Grace lettering a rabbit hutch name



Bob Jubb with a couple of nearly finished netsuke

Bob Turner carving a mermaid (Frank and Brian in the background)



Bob Turner carving a mermaid



right- Bob Fellingham carving a cockerel



Frank Botterill carving a walking stick



Mike Langridge with a scroll saw unicorn and small flower carving



Rod Dove carving.....?





Frank Davis carving a netsuke sleeping platypus

Chatterley Carvers (Horam)



Greta Chatterley at a Hailsham show



A show at Horam to attract new members



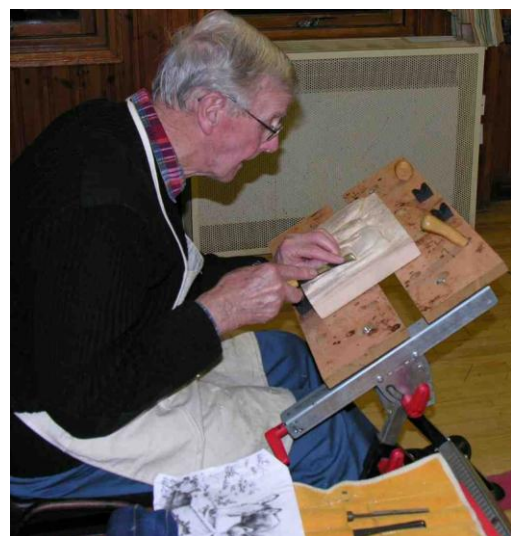
Brian Edwards working one of his many horses



Brian Akehurst carving a scarecrow



Tony Collins and Brian Edwards on world affairs



Tony Collins working in relief



Paul Acott, a potential new member for SWS?

Hillcrest Carving Club

Our club springs from George Swaysland's local authority evening classes which ran from 1960's to 1980's. We use the original woodwork classroom which was part of the Newhaven secondary school and we still use the same sturdy benches which the boys had. We rent the workshop on a monthly basis and the club operates on two days a week Monday and Thursday from 10.am-3,30pm. The workshop is spacious and has three storage rooms, all exclusively for our use. At the moment we have 18 members on Mon. and 10 on Thurs. who pay £15 per month which includes insurance, tea, coffee and biscuits, we bring our own lunches and so have a full day carving.

We have a wide range of equipment for members to use, including 2 bandsaws, 2 sanders, electric drills, lathe, saw bench, dremels, pyrography set, sharpening wheels and a wide range of tools.



At the moment we have two spaces available on Mondays and plenty of room on Thursdays and would welcome new members.

Wendy Quantrill

Bluebells

A stroll around the bluebell wood was on the plan that day

So I put on my summer frock to see what he would say

'Is that gear right for walking there?' he ventured, eyebrows raised

The fact he's noticed is a first, so frankly, I'm amazed

The weather's fine, the ground is firm and bluebells do abound

It's quiet there, though birds do sing; a very pleasant sound

So off we go, along the path as merry as can be

Until we find this lump of wood that fell off of a tree



It's shape is strange and full of holes to look

through at the ground
 A midget's view of flowers blue are framed
 within a round
 A photo clearly shows itself, so with camera
 I'm presented
 When on my tummy on the ground my at-
 tire is lamented

Or is the composition lacking and at best
 extremely poor
 I tried my hardest, legs stuck out, with cam-
 era not so light
 But don't ask him to say at all, because he's
 always right!
 Jean and Chris Grace

So, was it worth the effort, all the scrabbling
 on the floor



Woodcraft Diary

Issued 30 April 2014

(please send any errors/additions to SWS editor freakejr@gmail.com)

Weekly

Chatterley Carvers
 01435 872435

Tuesday
 Wednesday

Horam Village Hall 1900-2100hrs
 Bells Yew Green Village Hall 1930-2130hrs

Oakmeeds Carving Club
 01444 232955

Tuesday

Oakmeeds School, Burgess Hill 1900-2130hrs

Hillcrest Carving Club
 01273 845977

Monday & Thursday

Hillcrest School, Newhaven 1030-1530hrs

Monthly

South Downs Woodturners

Thursday (1st each month) Lancing Parish Hall 1900-2200hrs

Ashdown Woodturners Assoc.

Thursday (3rd each month) Colemans Hatch, Forest Row 01892 663754

Annual 2014

January

8/1/14

SWS meeting 1930hrs

Reprise of member's work at Annual Winter Show. Burgess Hill

February

12/2/14

SWS meeting 1930hrs.

Keith Pettit Demonstration of Wood Engraving / and Printing. Burgess Hill

March

7-8/3/14

The South East Woodworking & Power Tool Show, Kent County Showground, Detling, Kent (admission £8 on the day or £6 from website in advance)

12/3/14

SWS meeting 1930hrs. William Coleman, Ancient Trees in Local Woodlands. Burgess Hill

22/3/14

West Dean College Open Day for Visual Arts 1000-1600 hrs. Chichester

April

11-12/4/14

Yandles Woodworking Show Martock, nr Yeovil, Somerset

9/4/14

SWS meeting 1930hrs Richard Salmon. Bluebell Railway- wooden carriages. Burgess Hill

26/4/14

Midhurst Rother College Community Day 1000-1400hrs Midhurst, West Sussex

May

3-5/5/14	SWS Sale of Work	Wakehurst Place
3-5/5/14	Weald of Kent Craft Show	Penshurst, Kent
4-5/5/14	Blindley Heath Country Show	South Godstone, Surrey
10-11/5/14	Arlington Art & Craft Show	Arlington, East Sussex
10-11/5/14	Bodgers Ball	Herstmonceux, East Sussex
10/5/14	Craft show Plumpton College Open Day 10-1700 hrs, Ditching Road, Plumpton, East Sussex BN7 3AE	
14/5/14	SWS 1930hrs AGM.	Romi Jones. Pyrography demonstration/talk Burgess Hill 17-
18/5/14	Weird & Wonderful Wood	Haughley Park, Stowmarket
24/5/14	Heathfield Show	Heathfield, East Sussex
31/5-1/6/14	Floral Fringe Fair	Knepp Castle, West Sussex

June

6-8/6/14	South of England Show	Ardingly, Sussex
7-8/6/14	Sussex Guild Show	Pashley Manor, Ticehurst, East Sussex
11/6/14	SWS All day show, exhibition, demos and sales in Cyprus Hall, Burgess Hill	
21-22/6/14	West's Wood Fair	New Barn, Newhouse Lane, East Dean, W. Sussex
28-29/6/14	The Southern Tool Fair	Ageas Bowl off J7 M27

July

12/7/14	South Downs Wood Fair	Petersfield, Hampshire
17-20/7/14	Art in Action	Waterperry House, Oxford, Oxon

August

22-25/8/14	Chilterns Craft Show	Stonor Park, Henley-on Thames
23-25/8/14	Sussex Guild Show	Pashley Manor, Storrington, West Sussex
23-24/8/14	Stock Gaylard Oak Fair	Sturminster Newton, Dorset
24-26/8/14	Treefest	Westonbirt Arboretum, Tetbury, Glos.
24-25/8/14	Edenbridge & Oxted Show	Edenbridge, Kent

September

5-7/9/14	Weald of Kent Craft Show	Penshurst, Kent
10/09/14	SWS meeting 1930hrs	Roger Clark Games people play. Burgess Hill
26-28/09/14	Bentley Wood Fair, Bentley Country Park, Halland, E. Sussex	

October

10-12/10/14	D&M Tool Show 14	Kempton Park Racecourse, Staines
4-5/10/14	Surrey Hills Wood Fair	Bramley, Surrey
8/10/14	SWS meeting 1930hrs	TBC Burgess Hill
11-12/10/14	Weald and Downland Country Show, nr. Chichester	

November

12/11/14	SWS meeting 1930hrs.	John Freake Flora, Fauna, Fossils & Fracking. Burgess Hill
15/11/14	SWS Annual Exhibition & Sale of Work	Henfield

December

10/12/14	SWS meeting 1930hrs.	Glyne Edwards Punch & Judy – talk and show Burgess Hill
----------	-----------------------------	---

SWS Meetings. Unless otherwise stated, all meetings are held on the 2nd Wednesday in the month at The Cyprus Hall, Cyprus Road, Burgess Hill, West Sussex (7.30pm start)